

Public Document Pack

Tony Kershaw
Director of Law and Assurance

If calling please ask for:

Rob Castle on 033 022 22546
Email: rob.castle@westsussex.gov.uk

www.westsussex.gov.uk

County Hall
Chichester
West Sussex
PO19 1RQ
Switchboard
Tel no (01243) 777100



09 December 2021

Dear Member,

Performance and Finance Scrutiny Committee - Thursday, 2 December 2021

Please find enclosed the following presentation that was given at the meeting of the Performance and Finance Scrutiny Committee on Thursday, 2 December 2021 which was unavailable when the agenda was published.

Agenda No	Item
------------------	-------------

- | | |
|-----------|--|
| 5. | Growth Deals Programme (Pages 3 - 14) |
|-----------|--|

Yours sincerely

Tony Kershaw
Director of Law and Assurance

To all members of the Performance and Finance Scrutiny Committee

This page is intentionally left blank

West Sussex Growth Programme

Nick Burrell

Strategic Manager 2nd December

Page 3

Core Aims of the Programme

Each five-year tailor-made 'growth deal', identifies specific priority projects to bring local improvements for West Sussex residents, businesses and visitors that:

- are delivered - through 'growth programmes' - as part of a partnership approach between the public and private sectors
- promote local economic growth, including new homes and new jobs attract and bring together investment
- provide a clear set of formal working principles for how we will work together.
- Prioritise activity and resources.

Growth Deals are now in place with all districts and boroughs in the county.

Some Headlines

Programme Benefits –



Jobs



**Commercial
Space**



Homes



**Improve public
spaces**



**Sustainable
Transport**



Investment

Some Headlines

Programme Funding Sources

Page 6

WSSC Growth Capital
OPE Revenue Funding
LEP Funding
D&B Funding
Match Funding

The Programmes

- 88 projects Across the deals
- Successful with attracting over £141m
- 47 project lead by WSCC (33 live)
- 8 projects delivered and 12 in construction.

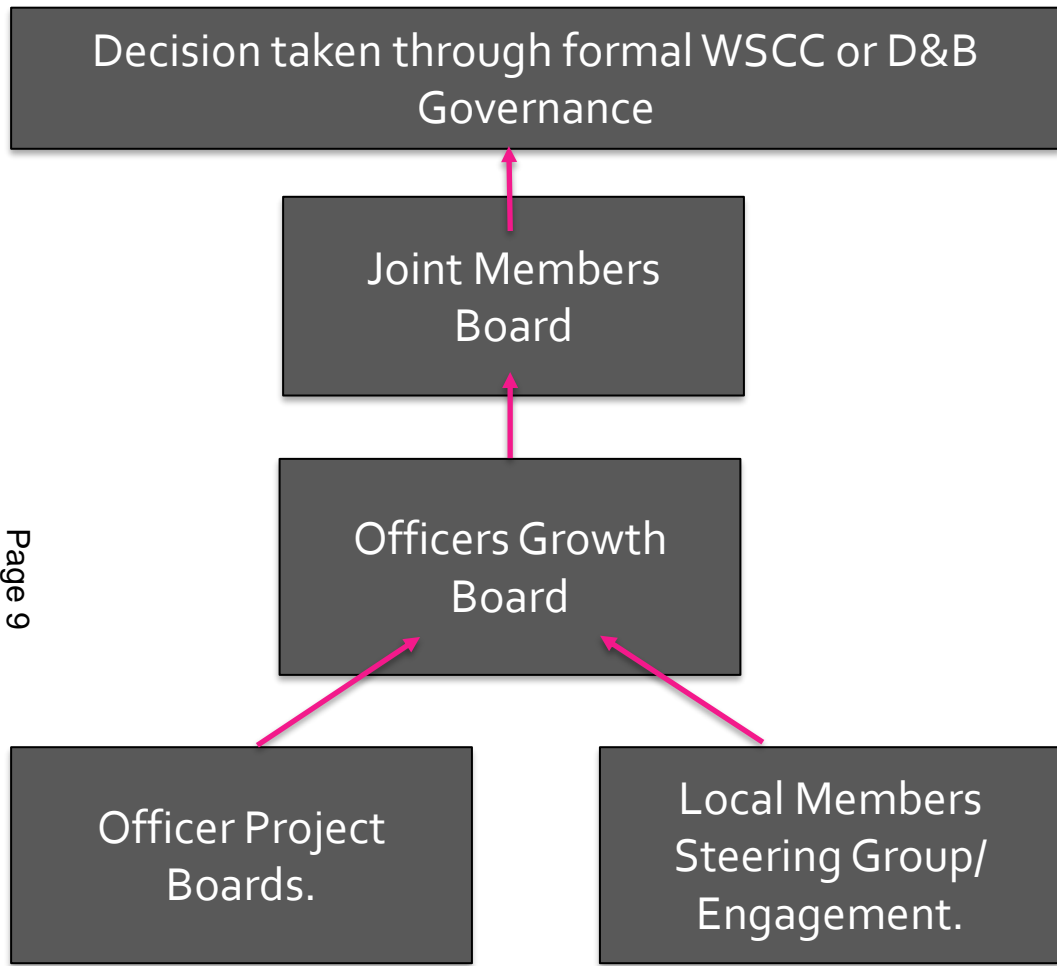


Agenda Item 5

The Deals

- Deals are not all the same and are at different stages.
- These are long term initiatives with benefits realisation going into the 2030's.
- They are managed by a small team in the Place Directorate.
- The projects can sometimes be complex with a number of partners.
- Bring projects to an informed view for a 'stop go decision'.

Growth Programme Structure & Governance



Decisions coming out of the below process would then be ratified by the normal governance of either or both authorities depending on the decision needed.

The Joint Members board, provided an opportunity to brief decision makers together before taking through the relevant governance, provide Member oversight to the deals/programme and provides an escalation point to resolve any issues within the deals.

The Officer Growth Board, provides joint oversight with the District or Borough for the projects within the deals/programme holding each other to account and managing performance.

The project boards provide officer oversight and management of the projects within the deals.
The steering groups provides local members with an opportunity to provide a steer on the programme and assess the performance.

Page 9

Agenda Item 5



THE WEST SUSSEX WAY

www.westsussex.gov.uk

Working in Partnership

District / Borough	Signed Deal	Priorities	
Adur & Worthing	✓ (Mar 2017)	<ul style="list-style-type: none"> • Worthing Town Centre – Public Realm • East Worthing Decoy Farm • New Monks Farm Shoreham Apt 	<ul style="list-style-type: none"> • Shoreham Harbour • OPE Partnership Pond Rd • Centenary House • Gigabit
Arun	✓ (Aug 2018)	<ul style="list-style-type: none"> • Bognor Regis Town • Littlehampton Town • OPE Joint Blue light Centre 	<ul style="list-style-type: none"> • Strategic Growth Priorities / Local Plan Infrastructure
Chichester	✓ (Mar 2018)	<ul style="list-style-type: none"> • Chichester Vision – West Street • Southern Gateway 	<ul style="list-style-type: none"> • Northern Gateway • Gigabit
Crawley	✓ (Dec 2016)	<ul style="list-style-type: none"> • Queens Square and Queens Way • Eastern Gateway • Station Gateway • Manor Royal 	<ul style="list-style-type: none"> • Gatwick Airport • Three Bridges Station • County Buildings • Crawley Fire Station
Horsham	✓ (Oct 2018)	<ul style="list-style-type: none"> • West and North of Horsham • Horsham Town Centre 	<ul style="list-style-type: none"> • Hurst Road • Former Novartis Site
Mid Sussex	✓ (Feb 2017)	<ul style="list-style-type: none"> • Northern Arc • A2300 • Sustainable Transport Package 	<ul style="list-style-type: none"> • The Brow • New Library • Science and Tech Park

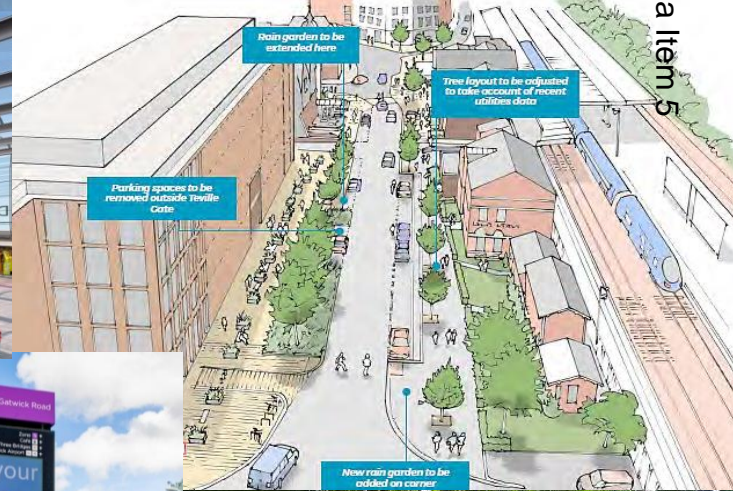
Key Milestones Achieved

District / Borough	Signed Deal	Key Priorities	■ Site investigation Viability ■ Preliminary Design feasibility ■ Detail Design ■ Construction ■ Delivered
Adur & Worthing	✓ (Mar 2017)	<ul style="list-style-type: none"> Worthing Town Centre Public Realm East Worthing Decoy Farm New Monks Farm Shoreham Apt 	<ul style="list-style-type: none"> Shoreham Harbour OPE Partnership Pond Rd Centenary House Gigabit
Arun	✓ (Aug 2018)	<ul style="list-style-type: none"> Bognor Regis Town Littlehampton Town OPE Joint Blue light Centre 	<ul style="list-style-type: none"> Strategic Growth Priorities / Local Plan Infrastructure
Chichester	✓ (Mar 2018)	<ul style="list-style-type: none"> Southern Gateway Chichester Vision – West Street 	<ul style="list-style-type: none"> Northern Gateway Gigabit
Crawley	✓ (Dec 2016)	<ul style="list-style-type: none"> Queens Square and Queens Way Eastern Gateway Station Gateway Manor Royal 	<ul style="list-style-type: none"> Gatwick Airport Three Bridges Station County Buildings Crawley Fire Station
Horsham	✓ (Oct 2018)	<ul style="list-style-type: none"> West and North of Horsham Horsham Town Centre 	<ul style="list-style-type: none"> Former Novartis Site Hurst Road
Mid Sussex	✓ (Feb 2017)	<ul style="list-style-type: none"> Northern Arc A2300 Sustainable Transport Package 	<ul style="list-style-type: none"> The Brow New Library Science and Tech Park

Page 11

Agenda Item 5

Project Examples From The Programmes



Map of town centre

Page 12

Other improvements

- Real time passenger information
- New bus shelters
- Walking and cycling infrastructure improvements
- Bus infrastructure investment

Environment

- Construction of high-quality improvements in Queens Square along main commercial streets
- Improved connectivity with Memorial Gardens and Greenway
- Fast, accessible and attractive space
- Attractive lighting for safety and aesthetics
- New seating and cycle racks

Public Realm Connectivity

- Public realm upgrades to transform the living environment
- New cycle routes
- Upgraded pavements
- Raised highway kerbs and new kerbside crossings to improve pedestrian and cycle connectivity between town centre core and regeneration sites
- New Green A commercial space

Stable Streets

- Public realm upgrades to transform the living environment
- Increased seating and new bus shelters
- Existing streetlights repositioned to increase space for pedestrians
- Highway changes to improve pedestrian space and crossings
- Shared space layouts
- Changes to improve visibility and attractiveness of the environment
- Low level planting to improve views and linkages to the town centre
- Tree planting to soften the vehicle-dominated environment
- Public realm improvements in The Markets



Learning

- Partnership working.
- Feasibility challenges with complex projects.
- Local vision and plans.
- Benefits realisation

What's Next?

- The Pandemic, supply chain and market forces will have an impact on delivery.
- We will refresh the deals in Arun, Chichester and Crawley.
- Continue to link in with emerging priorities and strategies.